



*We're There.*



# PRODUCT OVERVIEW

# Why Winters



## 1. Large and deep product offering

Allows access to many new and different customers

## 2. High quality products

Worry-free installations with an extremely low defect rate of **0.17%**

## 3. Five year warranty

Covering all instrumentation

## 4. Servicing all market segments

Covering both the industrial and commercial markets

## 5. High field support presence

A large number of Regional Sales Managers providing global coverage

## 6. Distributed globally

Global distribution in over 90 countries through 8 Winters sales and service offices

## 7. Distributor training events

Ensuring our partners are fully equipped to promote, sell and support our instrumentation products

## 8. Engineering team

Responding to technical RFQs and providing application know-how

## 9. Regular 3rd party factory audits

Customers and agencies verifying standards and certifications

## 10. Approvals

Adhering to higher standards: 3A RoHS, CE, CRN, CSA, FM, ISO 9001, UL

## 11. Distributor portal

All of our Winters tools at your convenience

## 12. Global AMLs

Easier acceptance into industrial and commercial projects

## 13. StabilizR®

Gauge dampening technology without glycerin filling

## 14. Strong R&D

Numerous new product launches

## 15. Platinum service

Front of the line service

## 16. UPC labelled product and packaging

Fast and simple product identification

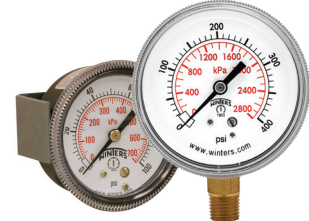
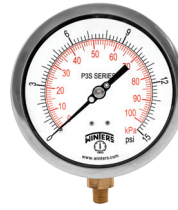
## 17. Comprehensive website and App

Embracing mobile technology

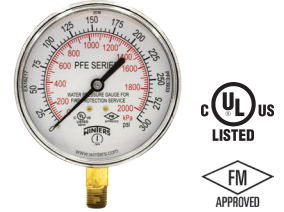
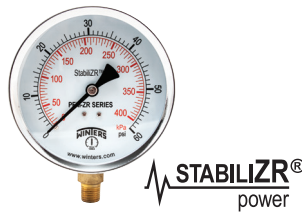
## 18. Canada's Best Managed Companies Program Winner Since 2017

Recognition for innovation and sustained performance re-enforces Winters' commitment to continuous improvement

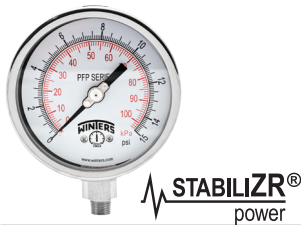
# Pressure Gauges



	<b>DPG Digital</b>	<b>P1S 100 Series*</b>	<b>P3S 300 Series</b>	<b>P9S/P9U 90 Series</b>
<b>Dial Size</b>	2.5" (63mm)	3.5" (90mm) 4" (100mm) 4.5" (115mm) 6" (150mm)	4.5" (115mm) 6" (150mm) 8.5" (215mm) 10" (250mm)	1.5" (40mm) 2" (50mm) 2.5" (63mm) 3.5" (90mm)
<b>Tube and Socket</b>	316 SS	Phosphor bronze/brass	316L SS/brass*	Phosphor bronze/brass
<b>Connection</b>	1/4" NPT	1/4" NPT	1/4" NPT for 600 psi or lower 1/2" NPT for 1,000 psi or higher	1/4" NPT 1/8" NPT
<b>Range</b>	Vac-0-15,000 psi	Vac-0-5,000 psi/kPa	Vac-0-20,000 psi/kPa	Vac-0-600 psi/kPa



	<b>PAG/PSQ 3A Sanitary</b>	<b>PEM-ZR Economy StabilizR®*</b>	<b>PFD Differential*</b>	<b>PFE Sprinkler*</b>
<b>Dial Size</b>	2.5" (63mm) 4" (100mm)	1.5" (40mm) 2" (50mm) 2.5" (63mm) 4" (100mm)	4" (100mm)	3.5" (90mm)
<b>Tube and Socket</b>	316L SS	Phosphor bronze/brass	Die-cast aluminum, silicon rubber	Phosphor bronze/brass
<b>Connection</b>	316 SS, electro-polished with 0.75", 1.5" or 2" Tri-Clamp®	1.5" dial: 1/8" NPT 2" dial: 1/8", 1/4" NPT 2.5", 4" dial: 1/4" NPT	1/8" NPTF high & low, side & back	1/4" NPT
<b>Range</b>	Vac-0-1,000 psi/bar	Vac-0-5,000 psi/kPa	-0.25-0-150"H <sub>2</sub> O, mmH <sub>2</sub> O, psi, PA	0-300 psi/kPa or 0/80/retard-250 psi/kPa

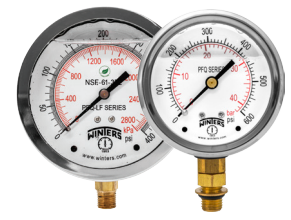


	<b>PFP/PFP-ZR Premium Filled</b>	<b>PPD/PRD/PSD/PVD Differential</b>	<b>PSC Safety Case</b>	<b>PSP Spiral Tube</b>
<b>Dial Size</b>	2.5" (63mm) 4" (100mm) 4.5" (115mm) 6" (150mm)	2.5" (63mm) 3.5" (90mm) 4.5" (115mm)	4" (100mm) 4.5" (115mm) 6" (150mm)	1" (25mm) 1.125" (30mm) 1.25" (32mm) 1.5" (40mm)
<b>Tube and Socket</b>	316L SS/brass*	SS and others	316L SS	304 SS/beryllium copper/brass*
<b>Connection</b>	2.5" dial: 1/4" NPT 4" dial: 1/4", 1/2" NPT, 1/2" BSP(G), 9/16" HP/HP autoclave 6" dial: 1/4", 1/2" NPT	1/4" or 1/2" NPT and others	1/4" or 1/2" NPT	1/8" NPT
<b>Range</b>	Vac-0-40,000 psi/kPa	"H <sub>2</sub> O-110 psid	Vac-0-20,000 psi/kPa	0-5,000 psi

# Pressure Gauges



	<b>PTG Test*</b>	<b>PAM Ammonia</b>	<b>PBC Forged Brass Case*</b>	<b>PCT/PCT-LF Contractor*</b>
<b>Dial Size</b>	4" (100mm) 6" (150mm) Mirror band for precise reading	2.5" (63mm), 3.5" (90mm), 4" (100mm), 6" (150mm), 8.5" (215mm), 10" (250mm)	2.5" (63mm) 4" (100mm)	4.5" (115mm)
<b>Tube and Socket</b>	Brass	316L SS	Brass	Phosphor bronze/brass or lead free phosphor bronze/brass
<b>Connection</b>	¼" or ½" NPT	¼" NPT	2.5" dial: ¼" NPT 4" dial: ¼", ½" NPT	¼" NPT
<b>Range</b>	Vac-0-10,000 psi/kPa	Vac-0-300 psi/°F	Vac-0-10,000 psi/kPa	Vac-0-5,000 psi/kPa



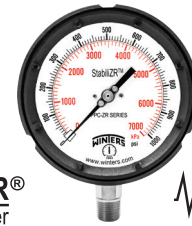
	<b>PDT Differential</b>	<b>PDX Duplex</b>	<b>PEM/PEM-LF/PEU Economy*</b>	<b>PFQ/PFQ-LF Filled</b>
<b>Dial Size</b>	4.5" (115mm) 6" (150mm)	4.5" (115mm) 6" (150mm)	1.5" (40mm) 2" (50mm) 2.5" (63mm) 4" (100mm)	1.5" (40mm) 2" (50mm) 2.5" (63mm) 4" (100mm)
<b>Tube and Socket</b>	316L SS/phosphor bronze/brass*	316L SS/phosphor bronze/brass*	Phosphor bronze/brass or lead free phosphor bronze/brass	316 SS/phosphor bronze* or 316 SS/lead free phosphor bronze*
<b>Connection</b>	¼" NPT	¼" NPT	1.5" dial: ⅛" NPT 2" dial: ⅛", ¼" NPT 2.5", 4" dial: ¼" NPT	1.5" dial: ⅛" NPT 2" dial: ⅛", ¼" NPT 2.5" dial: ¼" NPT, 7/16"-20 SAE 4" dial: ¼", ½" NPT
<b>Range</b>	0-600 psi	0-600 psi	Vac-0-5,000 psi/kPa	Vac-0-15,000 psi/kPa - PFQ Vac-0-15,000 psi/bar - SAE



**STABILIZR®**  
power



**STABILIZR®**  
power



**STABILIZR®**  
power

	<b>PFQ-ZR StabilizR®*</b>	<b>PLP Low Pressure</b>	<b>PN2/PN2-ZR NACE - MR0175-2002</b>	<b>PPC/PPC-ZR Process</b>
<b>Dial Size</b>	2.5" (63mm) 4" (100mm)	2.5" (63mm) 4" (100mm) 4.5" (115mm) 6" (150mm)	4" (100mm) 6" (150mm)	4.5" (115mm)
<b>Tube and Socket</b>	Phosphor bronze/brass	316 SS/brass*	316L SS	316L SS/phosphor bronze/brass*
<b>Connection</b>	¼" or ½" NPT	¼" NPT	¼" or ½" NPT	¼" or ½" NPT
<b>Range</b>	Vac-0-15,000 psi/kPa	Vac-0-10 psi/kPa	Vac-0-20,000 psi/kPa	Vac-0-20,000 psi/kPa

## Pressure Switches



### WPS Commercial

**Features:** Low pressure differential switch with SPDT

**Range:** 0.08 to 16.0 "H<sub>2</sub>O

**Applications:** Monitoring air filters, ventilation ducts and heat exchange

### 2WPS General Purpose

**Features:** Aluminum housing and wetted parts. CSA and CRN approved

**Range:** Vac to 500 psi

**Applications:** Suitable for all general purpose areas

### 4WPS Low Pressure

**Features:** Diaphragm type switch. CRN

**Range:** Vac to 150 psi

**Applications:** Low pressure gas and liquid monitoring

### 5WPS Differential

**Features:** Bellows actuated switch. Single and Dual available

**Range:** 15 psi to 5,000 psi

**Applications:** High-level control, including filtration and pumping stations

### 9WPS Explosion Proof

**Features:** All stainless steel design. CSA, CRN and dual-seal approved

**Range:** Vac to 10,000 psi

**Applications:** Hazardous locations; safety panels, gas compressor, turbines and pump skids

## Pressure Transmitters



### LE1 OEM

**Features:** Compact SS with ceramic sensor. Developed for OEM applications. CE approved

**Range:** Vac to 8,700 psi

**Applications:** Pump and compressor monitoring, refrigeration and HVAC

### LE3 General Purpose

**Features:** Can be utilized in many applications. CSA, ±0.5% accuracy

**Range:** Vac to 5,000 psi

**Applications:** Industrial machinery, hydraulics & pneumatics, compressor controls, boilers, chillers, AC & refrigeration

### LIS Intrinsically Safe

**Features:** Intrinsically safe design for hazardous areas. CSA, ±0.5% accuracy

**Range:** Vac to 8,700 psi

**Applications:** Appropriate for all hazardous areas where an intrinsically safe rating is required

### LM1 Submersible

**Features:** Heavy duty design. NEMA 6P full immersion and ±0.25% accuracy

**Range:** 0/2 psi to 0/50 psi

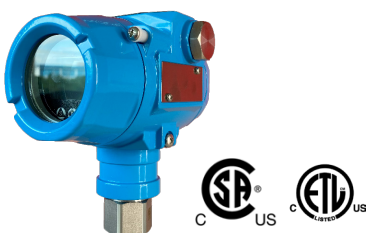
**Applications:** Lift station level measurement, waste water and reservoir monitoring

### LXP Explosion Proof

**Features:** Designed with explosion proof enclosure. cULus, CRN and single-seal approved. ±0.25% accuracy

**Range:** Vac to 10,000 psi

**Applications:** Hazardous locations in oil and gas installations including pump and compressor controls

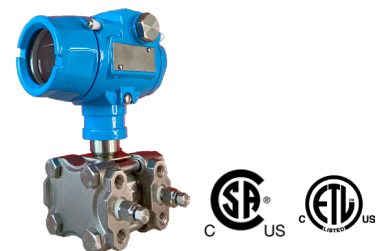


### WinSMART™ LY16 Pressure Transmitter

**Features:** Explosion proof smart pressure transmitter for hazardous environments. Providing both analogue and digital communication outputs including a highly functioning LCD display. With a built-in temperature sensor, LY16 provides 0.2%, 0.5%, 0.1%, 0.075% or 0.05% accuracy

**Range:** Vac-14,500 psi

**Applications:** Pressure monitoring for oil and gas, well head process control, petrochemical installations, power generation equipment and all hazardous locations



### WinSMART™ LY36 Differential Transmitter

**Features:** Explosion proof smart differential pressure transmitter for hazardous environments. Providing both analogue and digital communication outputs including a highly functioning LCD display with re-zero function. With a built-in temperature sensor, LY36 provides 0.075% or 0.05% accuracy

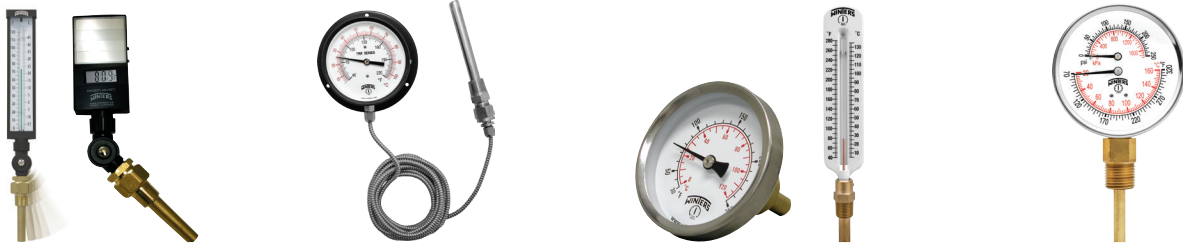
**Range:** Vac-1,450 psi

**Applications:** Differential pressure monitoring for oil and gas installations, well head process control, petrochemical installations, power generation equipment and all hazardous locations

# Thermometers



	TAG HVAC Gold Case*	TAS/TAS-LF Industrial 5**	TBM/THS Bi-Metal	TCT/TMT Surface
Dial/Scale	4.5" (115mm) 6" (150mm)	5" (125mm)	TBM: 1" (25mm), 2" (50mm) 3" (75mm), 4" (100mm) 5" (125mm), 6" (150mm) THS: 3" (75mm)	2.5" (63mm)
Sensing Element	Brass	Brass or lead free brass	SS	Bi-metallic coil
Bulb/Stem Length	2" (50mm)	1.825" (46mm)	TBM: 2.5" (63mm) - 48" (1,219mm) THS: 2.5" (63mm) - 24" (600mm)	-
Accuracy	±2% full scale	±2% full scale	±1% full scale	TCT: ±3% full scale TMT: ±2% full scale



	TIM/TIM-LF/TSD 9**	TRR Remote Reading	TSW/TSW-LF Hot Water*	TTD Tridicator*
Dial/Scale	TIM/TIM-LF: 9" (230mm) TSD: LCD size: 2.25" (57mm) x 2.25" (57mm)	2.5" (63mm), 3.5" (90mm) 4" (100mm), 4.5" (115mm) 6" (150mm), 8.5" (215mm)	Dial: 2" (50mm) or 2.5" (63mm) Scale: 8" (200mm)	2.5" (63mm) 3" (75mm)
Sensing Element	TIM/TIM-LF: Brass or lead free brass TSD: Brass	SS/brass*	Brass or lead free brass	Brass
Bulb/Stem Length	3.5" (90mm), 6" (150mm)	6" (150mm)	Dial: 1.5" (40mm) Scale: 2.5" (63mm)	2.5" (63mm): 2.15" (55mm) stem 3" (75mm): 2.75" (70mm) stem
Accuracy	±1% of reading	Gas actuated: ±1% full scale Vapour actuated: ±2% full scale	±1% full scale	Pressure: ±3-2-3% Temperature: ±3% full scale

# RTD and Thermocouples



## WinSMART™ TY52 Transmitter

**Features:** Explosion proof smart RTD temperature transmitter for hazardous environments. Providing both analogue and digital communication outputs (HART & Modbus) including a highly functioning LCD display. TY52 accuracy is 0.5%

**Range:**-50/400°C (-58/752°F)

**Applications:** Utilized and installed anywhere where temperature measurement is required. This product has a rugged design and is equipped with the communication protocols to meet all your day-to-day requirements



## TER Industrial RTD Sensor

**Features:** Highly accurate RTD with PT100 sensor and 4/20mA transmitter. ±0.15°C at 0°C accuracy with standard stainless steel stem material.

**Range:**-328°F to 1,022°F (-20°C to 550°C)

**Applications:** Single sensing installations include processing plants, paper mills, storage tanks and petrochemical facilities.





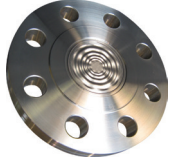


## TET Thermocouples Sensor

**Features:** Functional J & K type thermocouple sensors providing a wide range of temperature options, Accuracy of ±0.4°C Class 1

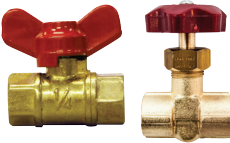

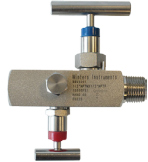

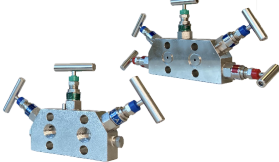
**Range:**J-type -328°F to 1,382°F (-200°C to 750°C), K-type -328°F to 2,192°F (-200°C to 1,200°C)

**Applications:** Single sensing installations include processing plants, and petrochemical facilities. Multi-point installations include refineries, reactors and gas-to-liquid process







## Diaphragm Seals

				
<b>D10 PVC</b>	<b>D40 OEM</b>	<b>D44 Flanged</b>	<b>D70 Industrial 2-piece</b>	<b>D81 Isolation ring</b>
<b>Features:</b> Durable and flexible PTFE seal with PVC housing	<b>Features:</b> Compact one-piece design. CRN	<b>Features:</b> All welded flanged construction. Continuous use rated seal	<b>Features:</b> Heavy duty, all stainless steel construction. Continuous use rated seal. CRN	<b>Features:</b> Allows for flow-through of highly viscous material, non-clogging
<b>Range:</b> Vac to 200 psi	<b>Range:</b> 30 psi to 1,000 psi	<b>Range:</b> 30 psi to 2,500 psi	<b>Range:</b> 30 psi to 2,500 psi	<b>Range:</b> Vac to 1,000 psi
<b>Applications:</b> To be installed in applications where the media would corrode metal instruments	<b>Applications:</b> Suited for compact OEM installations	<b>Applications:</b> Engineered environments such as upstream oil and gas and petrochemical plants	<b>Applications:</b> D70 is utilized with highly viscous and corrosive media	<b>Applications:</b> Pressure easurement in waste water, P&P and mining


## Valves and Manifolds

				
<b>SMV-LF &amp; SNV-LF Mini Valve*</b>	<b>NVA Valve</b>	<b>BBV 2-Handle</b>	<b>BBV 3-Handle</b>	<b>MVA 3 &amp; 5-Handle Manifold</b>
<b>Features:</b> An economical isolation valve for pressure gauges and transmitters. Brass or lead free brass wetted parts, CRN	<b>Features:</b> SS, CS and NACE configurations in straight and angle body. CRN	<b>Features:</b> SS, CS and NACE variants with 1/4" bleed and 2-handle control. CRN	<b>Features:</b> SS and NACE variants with 1/4" bleed and 3-handle redundant control. CRN	<b>Features:</b> Designed for use with differential pressure transmitters and impulse lines. With isolation, venting equalizing.
<b>Range:</b> Up to 400 psi	<b>Range:</b> 6,000 and 10,000 psi	<b>Range:</b> 6,000 and 10,000 psi	<b>Range:</b> 6,000 and 10,000 psi	<b>Range:</b> Up to 6,000 psi
<b>Applications:</b> Provides flow control for non-corrosive applications including water lines	<b>Applications:</b> Severe duty which require valve isolation	<b>Applications:</b> Heavy duty installations ideally bundled with transmitters and switches	<b>Applications:</b> Severe duty installations with redundant 3rd handle for safety	<b>Applications:</b> Critical in process and industrial environments for enabling repair, shut downs and updating of instrumentation

## Accessories

					
<b>SCT Cooling Tower</b>	<b>SOP Protector</b>	<b>SSN/SSN-LF SAS Snubbers*</b>	<b>SSP Syphon</b>	<b>STP/STP-LF Test Plug*</b>	<b>Thermowells</b>
<b>Features:</b> Perforated cover and spiral tube quickly dissipates media temperature. CRN	<b>Features:</b> Easy field adjustable setpoint. All stainless steel. CRN	<b>Features:</b> SS, brass and lead-free brass. CRN	<b>Features:</b> CS, brass* and SS materials. CRN	<b>Features:</b> Facilitates quick pressure readings. Brass and lead free brass. CRN	<b>Features:</b> Threaded, flanged and socket weld types in a variety of materials and sizes. CRN
<b>Range:</b> Up to 1,500 psi	<b>Range:</b> Up to 10,000 psi	<b>Range:</b> Up to 20,000 psi	<b>Range:</b> Up to 1,650 psi	<b>Range:</b> Up to 1,000 psi	<b>Range:</b> Up to 7,000 psi
<b>Applications:</b> Utilized for extremely high temperature media	<b>Applications:</b> For the protection of pressure instruments against line surges	<b>Applications:</b> For pressure pulsations	<b>Applications:</b> For steam service installations eg. boiler	<b>Applications:</b> Mainly used in plumbing, HVAC and refrigeration	<b>Applications:</b> Isolates the temperature sensor from the media and also closes the system

More accessories are available. Please contact us for a full list of products. Products with an "LF" suffix are available with lead free wetted parts.

\*  **WARNING:** This product can expose you to chemicals including lead, which is known to the State of California to cause cancer and birth defects or other reproductive harm. For more information go to [www.P65Warnings.ca.gov](http://www.P65Warnings.ca.gov).



# WINTERS INSTRUMENTS

MANUFACTURER OF INDUSTRIAL INSTRUMENTATION



**Winters Instruments is a global manufacturer of premium quality pressure and temperature instrumentation, with distribution partners in over 90 countries. Please contact us for your nearest Regional Manager.**

#### **Corporate - Canada**

Winters Instruments  
121 Rainside Road  
Toronto, Ontario  
M3A 1B2  
Tel: 416-444-2345  
1-800-WINTERS  
Fax: 416-444-8979  
sales@winters.com

#### **Canada - Calgary**

Winters Instruments  
2410D 2nd Avenue SE  
Calgary, Alberta  
T2E 6J9  
Tel: 403-723-6645  
1-800-WINTERS  
Fax: 403-723-6647  
calgary@winters.com

#### **USA - Houston**

Winters Instruments  
5400 W. Sam Houston Pkwy N.  
Houston, Texas  
77041  
Tel: 281-880-8607  
1-800-WINTERS  
Fax: 281-880-8614  
usasales@winters.com

#### **USA - Buffalo**

Winters Instruments  
Airport Commerce Park  
455 Cayuga Rd., Suite 650  
Buffalo, New York  
14225  
Tel: 716-874-8700  
1-800-WINTERS  
Fax: 716-874-8800  
usasales@winters.com

#### **Asia - Shanghai**

Winters Instruments  
Shanghai WitHub Hi-Tech  
Business Center Suite 308  
No. 333 Hongqiao Road  
Shanghai 200030 China  
Tel: 86-21-6104-2610  
Fax: 86-21-6104-2615  
asiasales@winters.com  
www.wintersasia.com

#### **Latin America**

Winters Instruments  
Lamadrid 121  
Los Troncos del Talar, B1608CEC  
Buenos Aires, Argentina  
Tel: 54-11-4715-3036  
latinsales@winters.com  
www.winters.com.ar

#### **United Kingdom - Northampton**

Winters Instruments  
Unit, 4B Kingsfield Cl,  
Northampton,  
NN5 7QS  
Tel: 44-0-1604-434826  
emeasales@winters.com  
www.winters.com

#### **Europe - Middle East - Africa**

Winters Instruments  
Dubai Airport Free Zone  
6WB G50  
Dubai, United Arab Emirates  
Tel: 971-4295-9177  
Fax: 971-4295-9177  
emeasales@winters.com



Distributed by: